

Building Solutions

Bridport House, urban architecture of the future, marks the first time that CLT has been chosen for an entire multi-storey structure in the UK.

Wood-based innovations and solutions

Stora Enso Building and Living provides wood-based innovations and solutions for everyday living and housing needs. Its product range covers all areas of urban construction, from supporting structures to interior design and environmental construction. The further-processed products include massive wood elements and housing modules, wood components and pellets. A variety of sawn timber goods complete the selection.

Building and Living serves public and private sector customers, such as construction companies, merchandisers and retailers. Our desire is to meet the needs of our customers through product innovation and utilization of the state of the art production processes.

You benefit from our global but, locally operating sales network, combined with our vast distribution experience and the broad understanding of markets which you would expect from a global company. Building and Living has more than twenty production units in Europe and operates globally, with

its main markets in Europe, the Middle East and North Africa, and Asia Pacific. All our products are made of renewable, high-quality European pine or spruce with 100% traceability.

Stora Enso is the global rethinker of the paper, biomaterials, wood products and packaging industry. The roots of the company can be traced back over 700 years making Stora Enso one of the oldest companies in the world. The group has a turnover in excess of €10,8 billion, employs 28,000 staff and is a worldwide organization and market leader in a number of areas.

Stora Enso Building and Living is amongst the foremost manufacturers of the sustainable material cross-laminated timber (CLT), which has recently been used in many UK based projects. The material is increasingly being specified because of its sustainability credentials along with its inherent structural qualities such as speed and accuracy of construction, airtightness and lighter weight in comparison to traditional methods of construction.

For Stora Enso CLT is an important product and will be the cornerstone to develop further into the construction market, especially in the UK and Europe where regulatory trends are growing towards tighter specifications.

Our UK strategy is to offer a complete service: supply, engineering and installation with our UK partner Eurban LTD, who since pioneering the introduction of CLT in 2003 have delivered more than 150 projects ranging from education building, to mid and high rise apartments and one-off award winning buildings.

We want to provide our customers with the certainty that they are working with a supplier that can deliver the total package - backed by a stable, international company.

Stora Enso is at the forefront of CLT manufactures with excess capacity of 120,000m³ of CLT per annum at its two state of the art mills in Central-Europe, which ensures supply with a dedicated supply partner offering specialized and standard transport solutions.

storaenso.com/buildingandliving

clt.info

facebook.com/storaensolvingroom



The development of the new CLT-based Urban MultiStorey concept has been not only one of the most important Building Solutions actions in strengthening our strategy but also the start of a totally new concept in construction.

Polaris, Unique Social Housing Project in Milan.

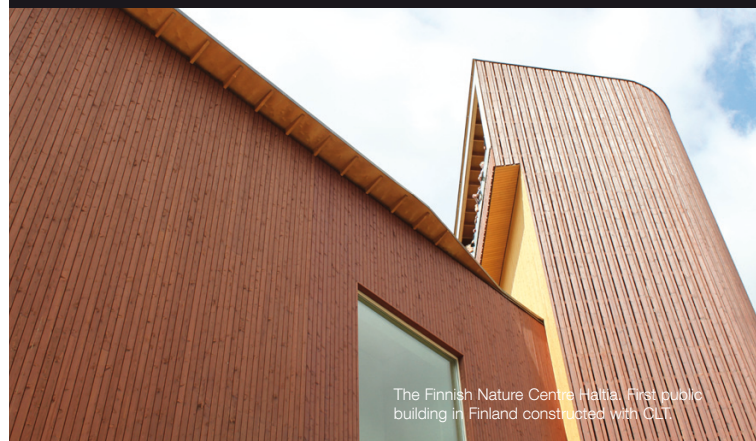


Photo: Promolegno



Regent's Park. Photo: David Jensen

Stora Enso is a name you can trust!



The Finnish Nature Centre Hättä. First public building in Finland constructed with CLT.



Office with CLT



Wood City is an urban wooden quarter rising in the Helsinki, Finland, throbbing with residential, working and hotel life around its courtyard. woodcity.fi



G3 Shopping Resort, Gerasdorf, Vienna. Largest shopping centre in Austria built in a single phase.