



STEWART
Milne
TIMBER SYSTEMS

WORKING WITH YOU TO BUILD

GREENER
FASTER
BETTER

GREENER

“USING WOOD IN
CONSTRUCTION IS A
COST-FREE SOLUTION
TO CARBON CAPTURE –
REDUCING CO₂ IN THE
ATMOSPHERE.”

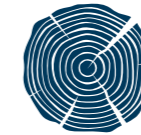
Wood for Good

The use of timber in a building will store the
carbon for the life-cycle of that building.
A two storey timber building stores up to
72 kilos of carbon per square metre



“THE SUBSTITUTION OF WOOD FOR CARBON-INTENSIVE MATERIALS IS ONE OF THE MOST EFFECTIVE WAYS TO USE LIMITED BIOMASS RESOURCES TO MITIGATE CLIMATE CHANGE.”

*The Committee on
Climate Change UK*



Timber frame uses **35% less embodied carbon** in the construction of a home compared to masonry methods



100% of our timber materials are from renewable PEFC **sustainable forestry** providers and certified under chain of custody



Replacing just 1 cubic metre of concrete with timber in construction can **save 1 tonne of CO2 emissions**



Timber frame **reduces energy consumption in the home by 40%** over its lifetime



For every tree harvested **3 more are planted**



100% of our timber and plastic waste is **recycled and reused**

FASTER

“ THE WORKSTREAM FOR WHICH I’M RESPONSIBLE PRESENTS US WITH SOME LARGE-SCALE SCHEMES THAT ARE FAST MOVING, FAST TRACK, HIGH VOLUME DELIVERY SCHEMES, AND WE SIMPLY CAN’T AFFORD HITCHES ON SITE.

EQUALLY OUR CLIENT IS WORKING TO A BUDGET AND CLEARLY THERE ARE FINANCIAL PARAMETERS TO WORK TO ... DERIVING VALUE FOR MONEY FOR OURSELVES AND FOR OUR CLIENT.”

John Leary, Major Projects Director, Lovell
Ministry of Defence, Wiltshire



It takes on average **120 minutes** to make **one full kit** for a house



A **3-bed detached house** can be supplied and erected in **5 days**

With offsite construction currently used for one in five new homes, industry stakeholders know it to be **low-risk, durable and exceptional value.**

Across our UK factories we have capacity to manufacture **10,000 units per annum** and the ability to flex our manpower upwards to accommodate larger projects and shorter lead times.

We have three manufacturing facilities, one at Witney, near Oxford and the second and third at Westhill and Grangemouth in Scotland. These enable us to meet the requirements of the UK market with ease.

Our timber engineering provides greater design flexibility for new-build home designers, with our **closed panel Sigma® II build solution.**

All our timber frame solutions are covered by ISO-9001 quality certification, covering all areas of the business including design and manufacture.



We manufacture timber frame at scale in the factories and safely build the frames onsite – **wind and watertight in 2 days**



Timber frame can reduce fuel poverty, **saving £437 per year** on a 3-bed home compared to older homes

Timber frame manufacturing uses **80% less energy** than concrete blocks and can be 100% powered by renewable energy such as PV or low carbon heat, produced by timber waste.

Stewart Milne Timber Systems worked with A2Dominion on its development in North West Bicester. This pioneering housing project is the **UK's only true zero-carbon community** and aims to deliver the highest standards of sustainable living to its residents.

We designed, manufactured and installed the initial 93 Sigma® II build systems for the first homes as part of the 393-home Exemplar phase of the project.

GREENER ————— **FASTER** ————— **BETTER** —————
Reduced energy consumption Reduced site build time Better performing homes



BETTER

“ HOMES BUILT IN A FACTORY
GUARANTEE BETTER QUALITY AS
THEY ARE BETTER ENVIRONMENTS
FOR ASSEMBLING AND BUILDING
IN THAN OUTDOORS.”

Fiona Fletcher-Smith,
L&Q's Group Director of Development



The Build Offsite Property Assurance Scheme (BOPAS) is an industry-leading accreditation scheme and guarantees a product's consistent through-life performance that it will remain saleable and insurable for a minimum of 60 years.

Stewart Milne Timber Systems' Sigma® II system is the only advanced closed panel timber frame construction system to achieve BOPAS accreditation. Offering an integrated approach with guaranteed performance and cost-effectiveness, this closed panel timber system is the result of seven years' collaborative research and development.



“ THEIR SIGMA® II
CLOSED PANEL SYSTEM
PUT THEM ABOVE
THEIR COMPETITORS.”

Adam Gaggini, Orbit Homes
Willett House, Wellesbourne, Warwick

Falcon House, Curbridge Business Park
Downs Road, Witney, Oxon OX29 7WJ
Sat nav: OX29 0SY

Peregrine House, Mosscroft Avenue
Westhill Business Park, Westhill
Aberdeen AB32 6JQ

Email: timber@stewartmilne.com

STEWART
Milne
TIMBER SYSTEMS

Learn how Stewart Milne Timber Systems can transform your building projects

STEWARTMILNETIMBERSYSTEMS.COM ——— **0845 900 3418**